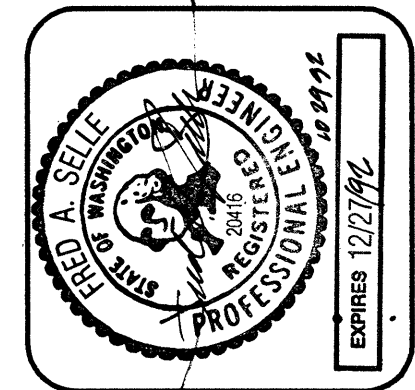
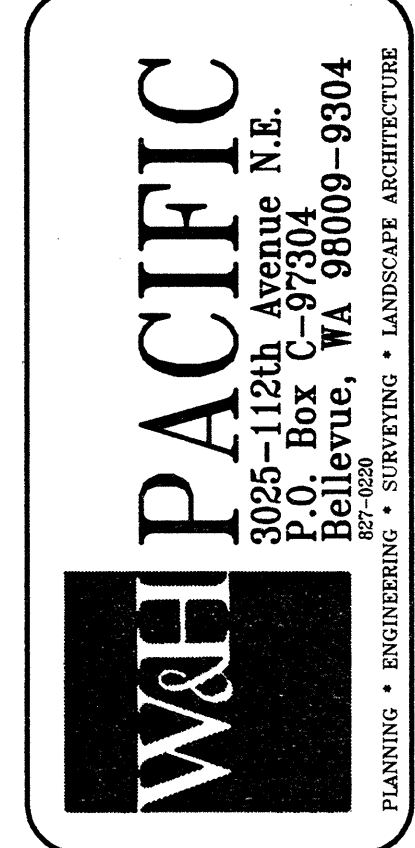
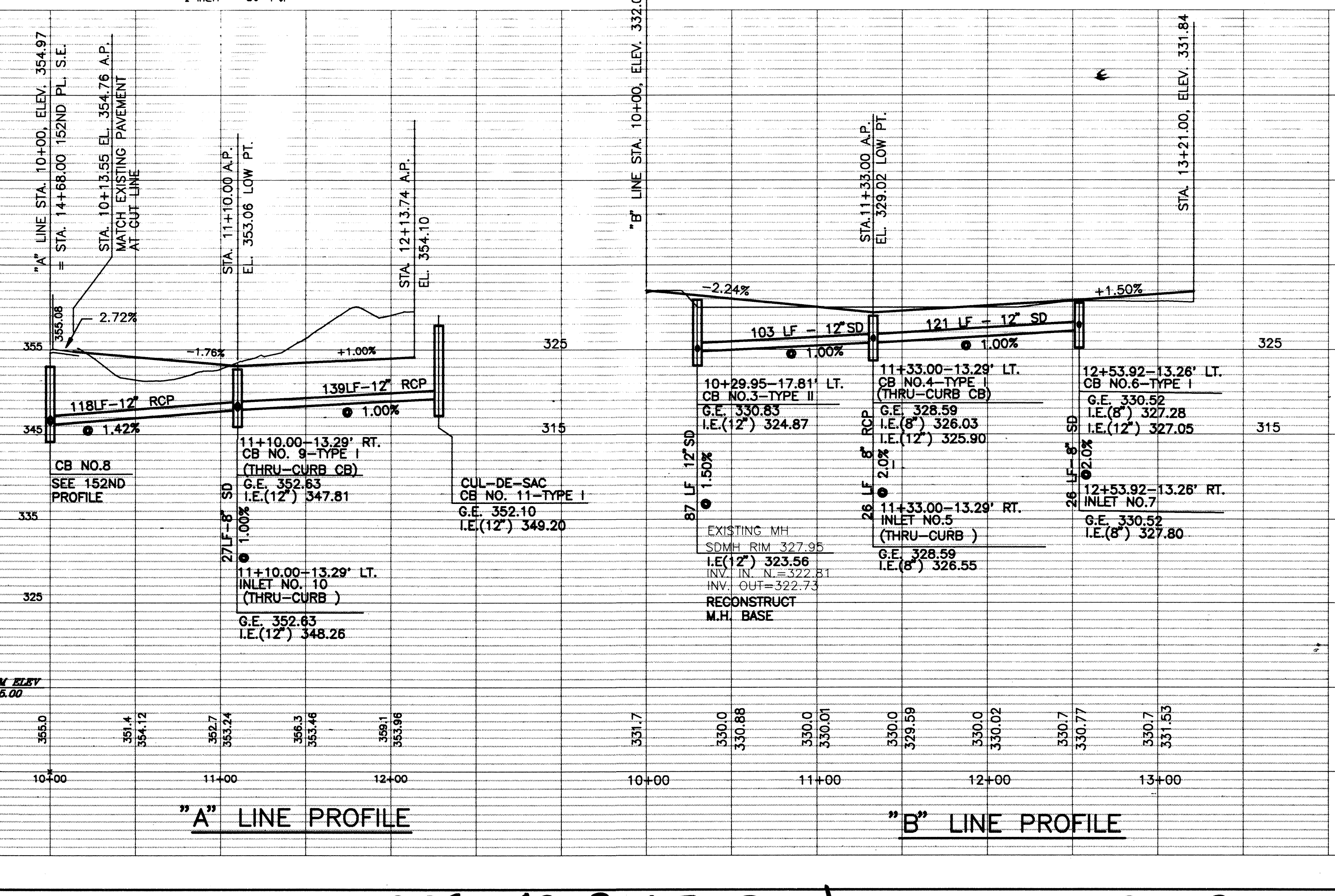
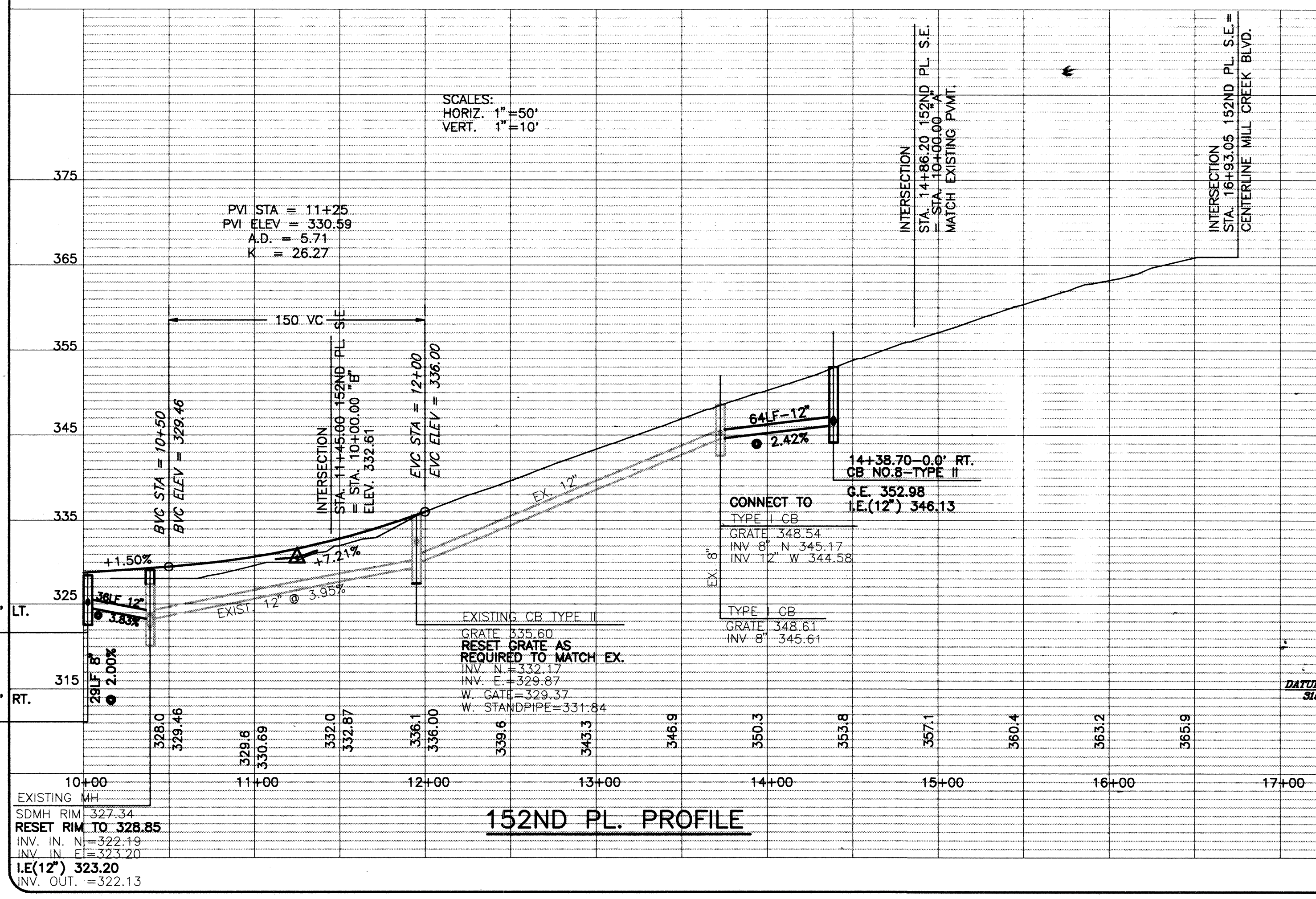
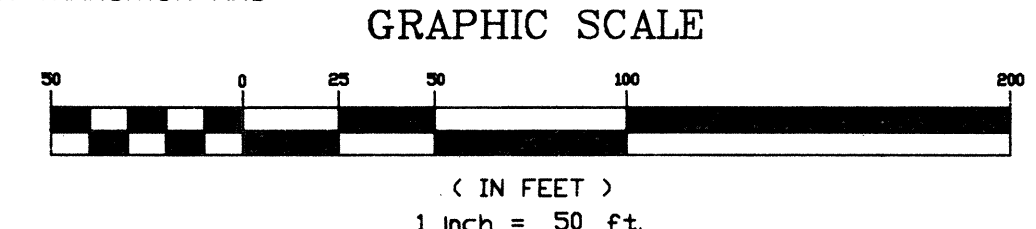
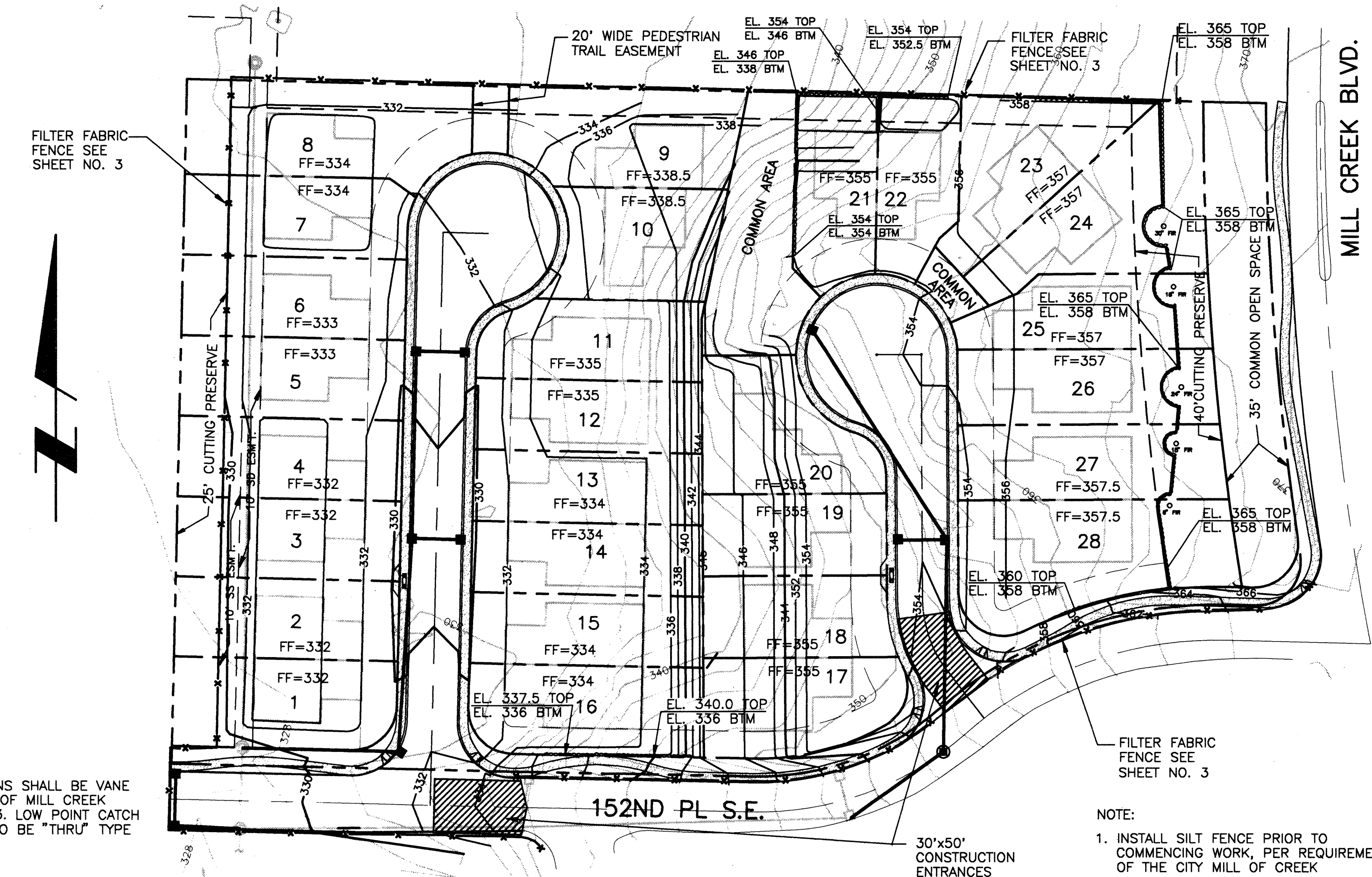


CURVE DATA

NO.	Δ	RADIUS	LENGTH
①	37° 09'28"	65.00'	42.15'



UNITED DEVELOPMENT CORPORATION
 MILL CREEK 20
 PLAN AND PROFILE
 MILL CREEK WASHINGTON

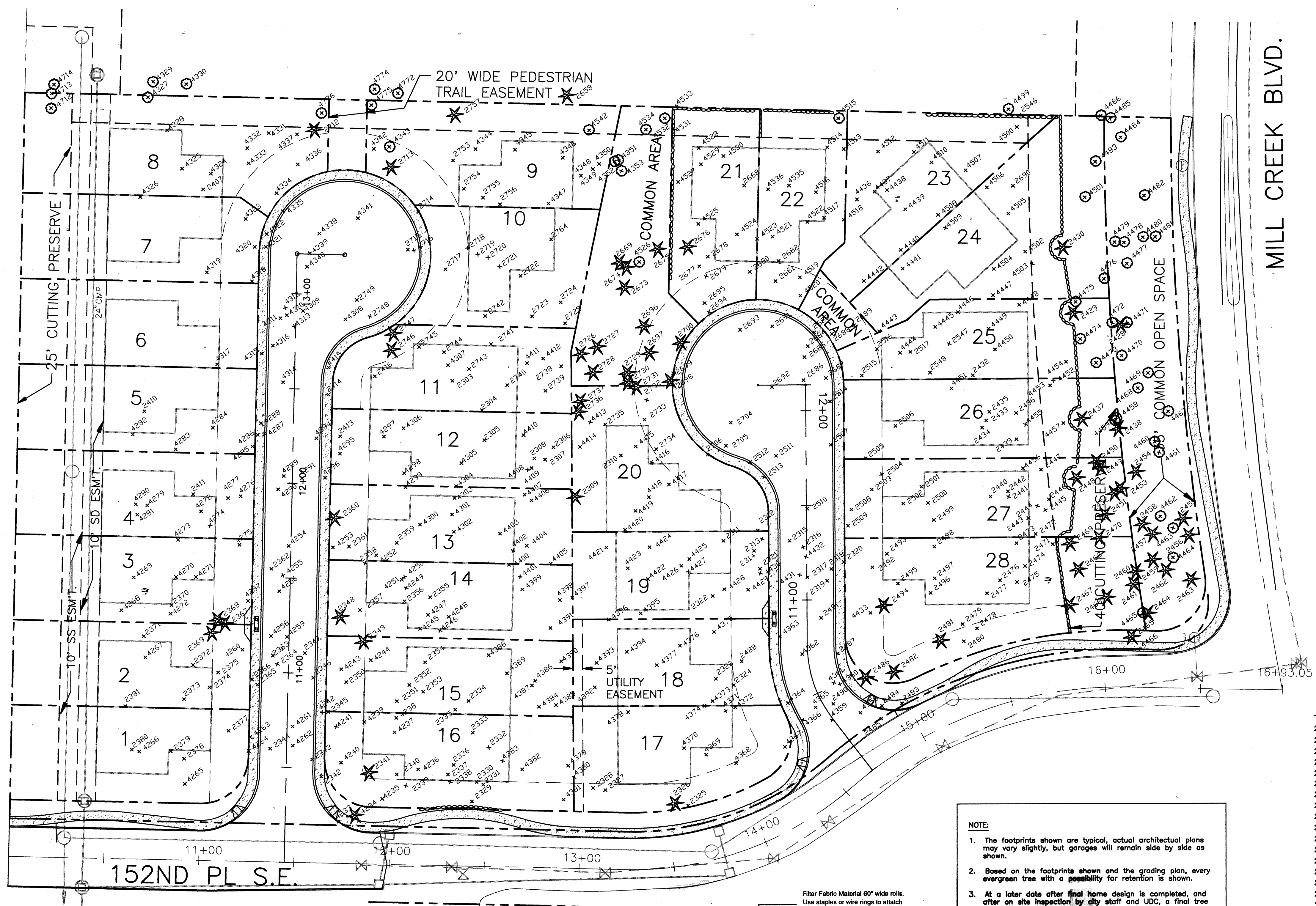


Revisions	By	Date
STORM DRAINAGE & PROFILES "A" & "B"	WB	10/12/24

Date: 10-28-24
 Scale: 1"=50'
 Drawn: WB/CRL
 Checked: MJS
 Approved: FAS

Dwg. Number: 3-3051-3701
 Filename: 3701PP01
 SHEET 2 of 4

SEE AS-BUILT PLAN CYPRESS HDEV-092



CURB RETURN DATA
ELEVATIONS ARE TO FLOWLINE

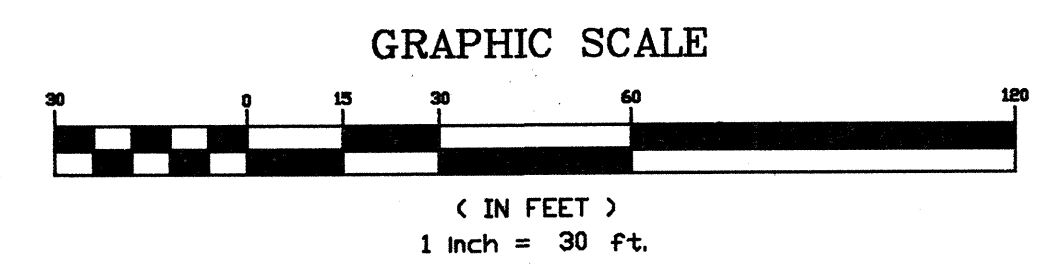
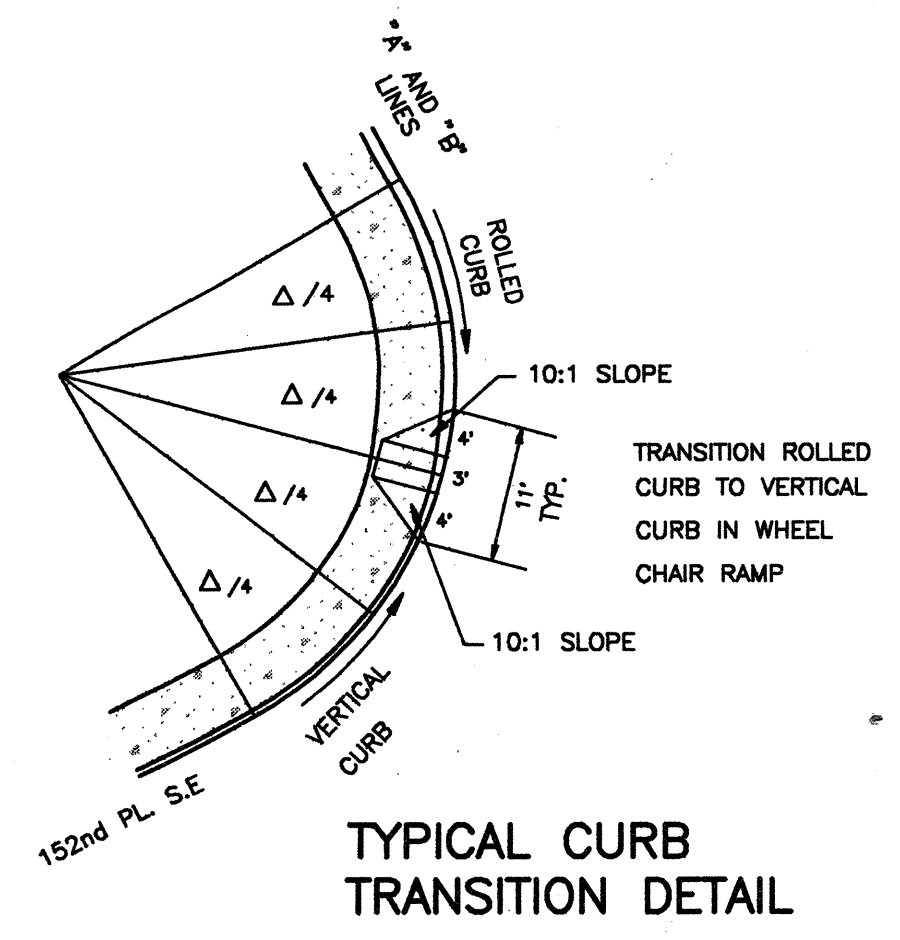
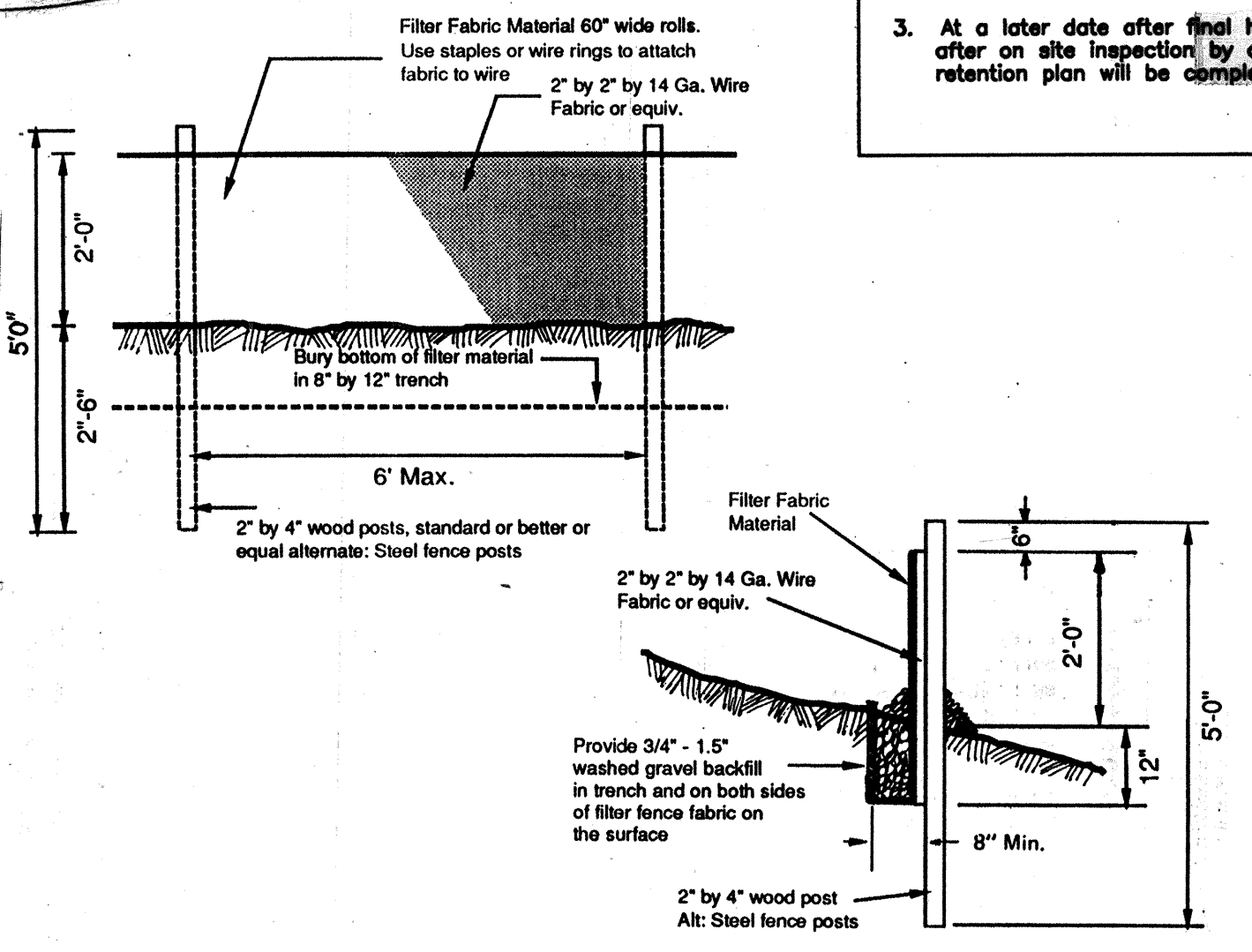
A LINE			
1	Δ=104 7'09" R=31.00' L=56.69'	Δ/4 357.26 Δ/8 356.29 Δ/8 355.09 Δ/4 354.24 Δ/4 353.99	15+08.56, 16.15' LT.(152ND) 10+63.00, 14' RT.(A')
2	Δ=253 2'35" R=39.00' L=172.48'	Δ/8 353.80 Δ/8 353.72 Δ/8 353.30 Δ/8 352.88 Δ/8 352.46 Δ/8 352.20 Δ/8 352.50 Δ/8 352.76	12+13.74, 14' RT.(A') 11+75.41, 36.43' LT.(A')
3	Δ=73 2'35" R=31.00' L=39.71'	Δ/4 352.76 Δ/4 352.89 Δ/4 352.96 Δ/4 353.05	11+75.41, 36.43' LT.(A') 11+46.65, 14' LT.(A')
4	Δ=91 0'012" R=31.00' L=49.24'	Δ/4 354.19 Δ/4 353.97 Δ/4 353.08 Δ/4 352.16	10+42.19, 14' LT.(A') 14+17.14, 16.20' LT.(152ND)
B LINE			
5	Δ=89 5'6"01" R=31.00' L=48.66'	Δ/4 335.14 Δ/4 333.96 Δ/4 332.42 Δ/4 331.35	11+89.96, 16.42' LT.(152ND) 10+47.42, 14' RT.(B')
6	Δ=73 2'35" R=31.00' L=39.71'	Δ/4 330.56 Δ/4 330.89 Δ/4 331.36 Δ/4 331.91	12+53.92, 14' RT.(B') 12+83.63, 36.14' RT.(B')
7	Δ=253 2'35" R=39.00' L=172.48'	Δ/8 332.41 Δ/8 333.60 Δ/8 334.25 Δ/8 334.33 Δ/8 333.95 Δ/8 333.27 Δ/8 332.63 Δ/8 332.18	12+83.63, 36.14' RT.(B') 13+21.00, 14.0' RT.(B')
8	Δ=89 5'9"59" R=31.00' L=48.69'	Δ/4 330.79 Δ/4 330.98 Δ/4 331.00 Δ/4 330.82	10+46.50, 14' LT.(B') 11+00.00, 15.50' LT.(152ND)

TREES TO BE SAVED

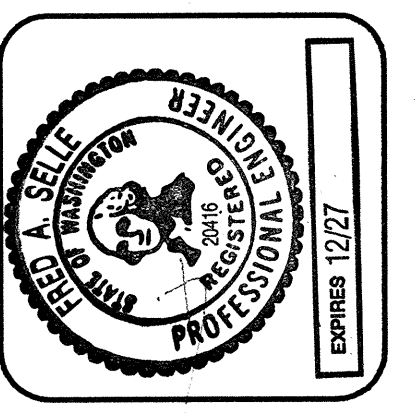
NO.	TYPE	NO.	TYPE	NO.	TYPE	NO.	TYPE
2309	30" FIR	2468	16" FIR	4327	12" ALDER	4484	14" ALDER
2326	25" FIR	2469	8" FIR	4329	13" ALDER	4485	9" ALDER
2341	25" FIR	2470	14" FIR	4330	13" ALDER	4486	9" ALDER
2348	20" FIR	2481	12"-14"	4343	10"-10"	4499	13"-13"
2349	20" FIR		SPLIT FIR		SPLIT CHERRY		SPLIT ALDER
2360	20" FIR	2482	18" FIR	4351	8" ALDER	4501	15" ALDER
2367	14" FIR	2486	20" FIR	4352	8" ALDER	4515	8" ALDER
2368	8" FIR	2484	14" FIR	4353	8" ALDER	4528	12" ALDER
2369	10" FIR	2658	20"	4458	10" ALDER	4532	8" ALDER
2428	8" FIR		HEMLOCK	4459	11" ALDER	4534	10" ALDER
2429	18" FIR	2669	12" FIR	4460	14"-6"-6"	4542	8" ALDER
2430	30" FIR	2673	14" FIR		SPLIT ALDER	4712	16" ALDER
2437	24" FIR	2674	18" FIR	4461	11" ALDER	4713	11" ALDER
2438	8" FIR	2675	14" FIR	4462	13" ALDER	4714	12" ALDER
2448	15" FIR	2676	12" FIR	4463	13" ALDER	4772	9" ALDER
2449	12" FIR	2696	14" FIR	4464	15" ALDER	4774	11" ALDER
2450	12" FIR	2697	14" FIR	4465	9" ALDER	4775	14" ALDER
2451	15" FIR	2698	12" FIR	4467	9" ALDER	4776	11" ALDER
2452	15" FIR	2700	20" FIR	4468	11" ALDER		
2453	15" FIR	2712	24" FIR	4469	14" ALDER		
2454	9" FIR	2713	16" FIR	4470	10" ALDER		
2455	12" FIR	2726	17" FIR	4471	10" ALDER		
2456	9" FIR	2727	15" FIR	4472	13" ALDER		
2457	9" FIR	2728	11" FIR	4473	11" ALDER		
2458	11" FIR	2729	16" FIR	4474	9" ALDER		
2459	14" FIR	2730	15" FIR	4475	10" ALDER		
2460	10" FIR	2731	14" FIR	4476	10" ALDER		
2461	15" FIR	2736	16" FIR	4477	18" ALDER		
2462	10" FIR	2737	16" FIR	4478	10" ALDER		
2463	18" FIR	2746	15" FIR	4479	15" ALDER		
2464	12" FIR	2747	20" FIR	4480	17" ALDER		
2465	8" FIR	2757	19"-24"	4481	8" ALDER		
2466	8" FIR		SPLIT CEDAR	4482	9" ALDER		
2467	12" FIR	4234	16" FIR	4483	15" ALDER		

NOTE:
1. The footprints shown are typical, actual architectural plans may vary slightly, but garages will remain side by side as shown.
2. Based on the footprints shown and the grading plan, every evergreen tree with a possibility for retention is shown.
3. At a later date after final home design is completed, and after on site inspection by city staff and UDC, a final tree retention plan will be completed.

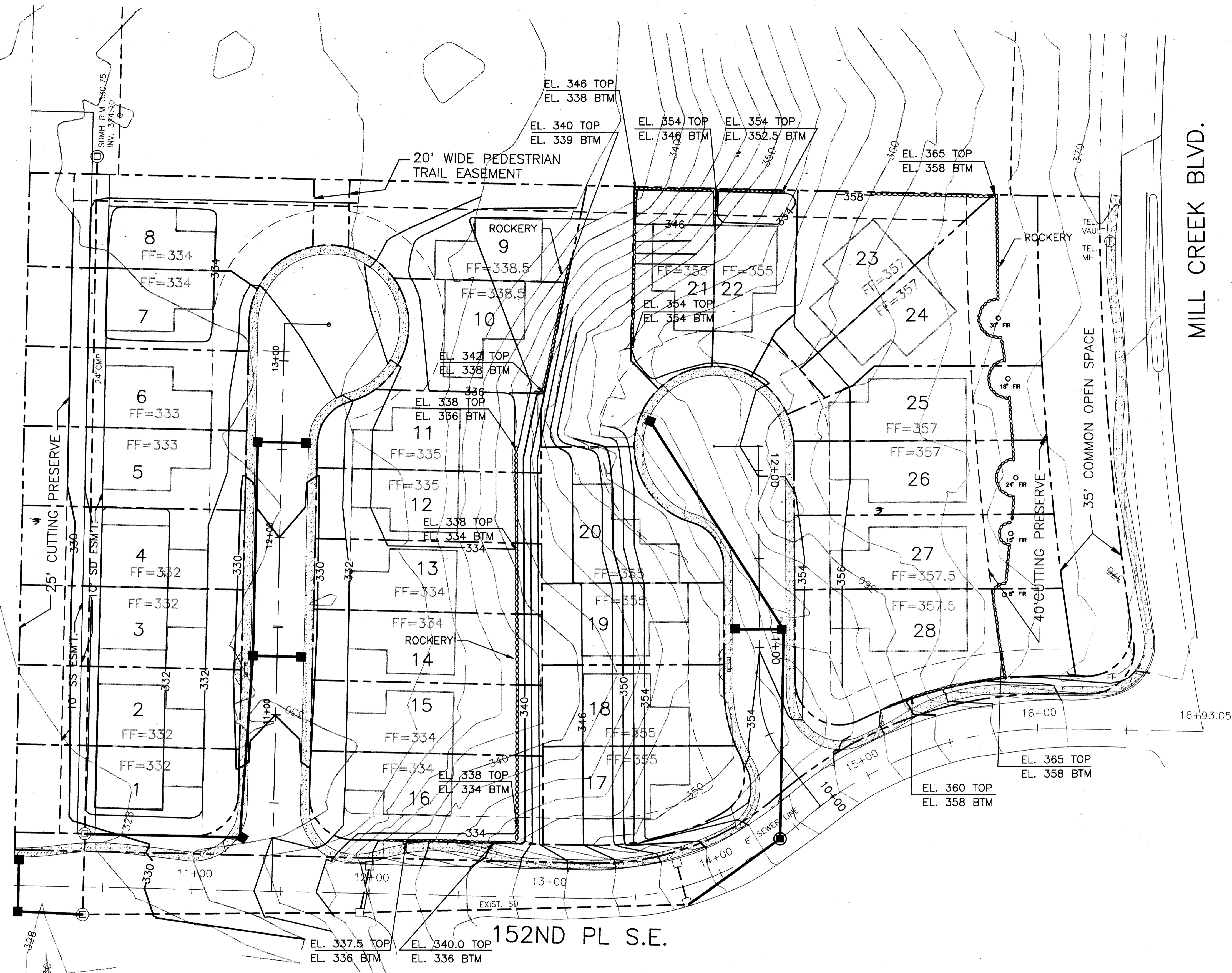
TREE PLAN
SCALE: 1"=30'



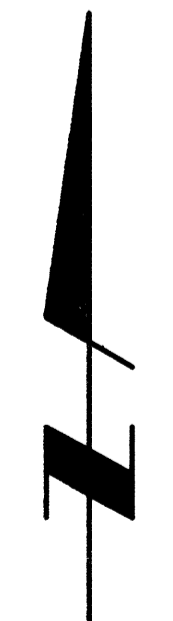
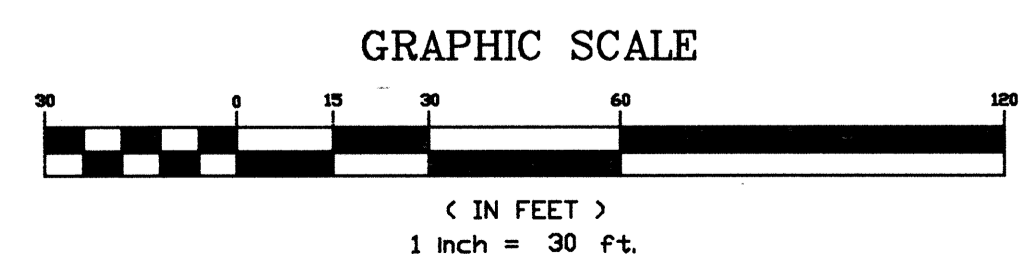
LEGEND
★ 2341
⊕ 4388
TREES TO BE SAVED



Revisions	By	Date



ALTERNATIVE GRADING PLAN



MILL CREEK BLVD.

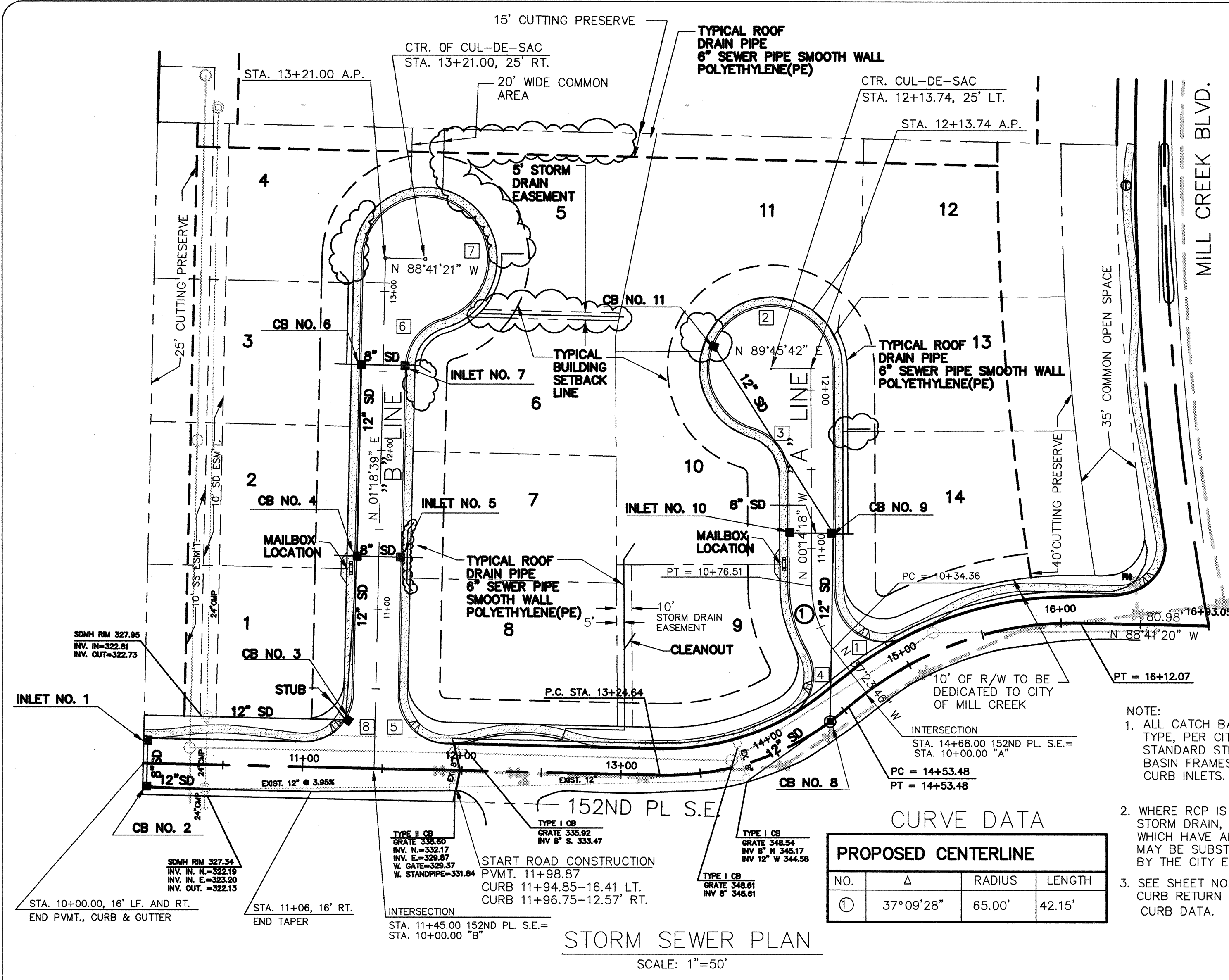


UNITED DEVELOPMENT CORPORATION
 MILL CREEK 20
 ALT. GRADING PLAN
 MILL CREEK WASHINGTON



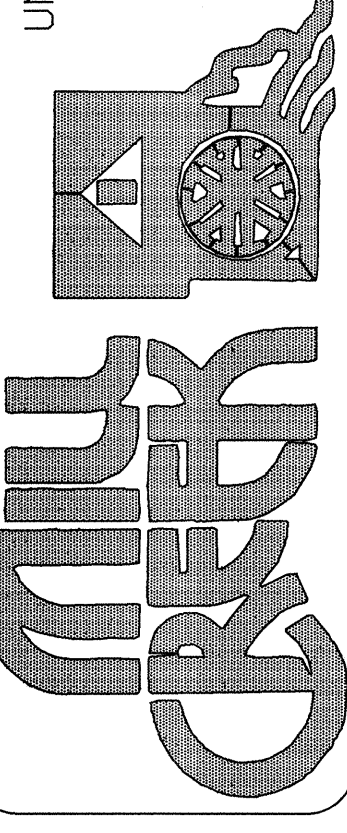
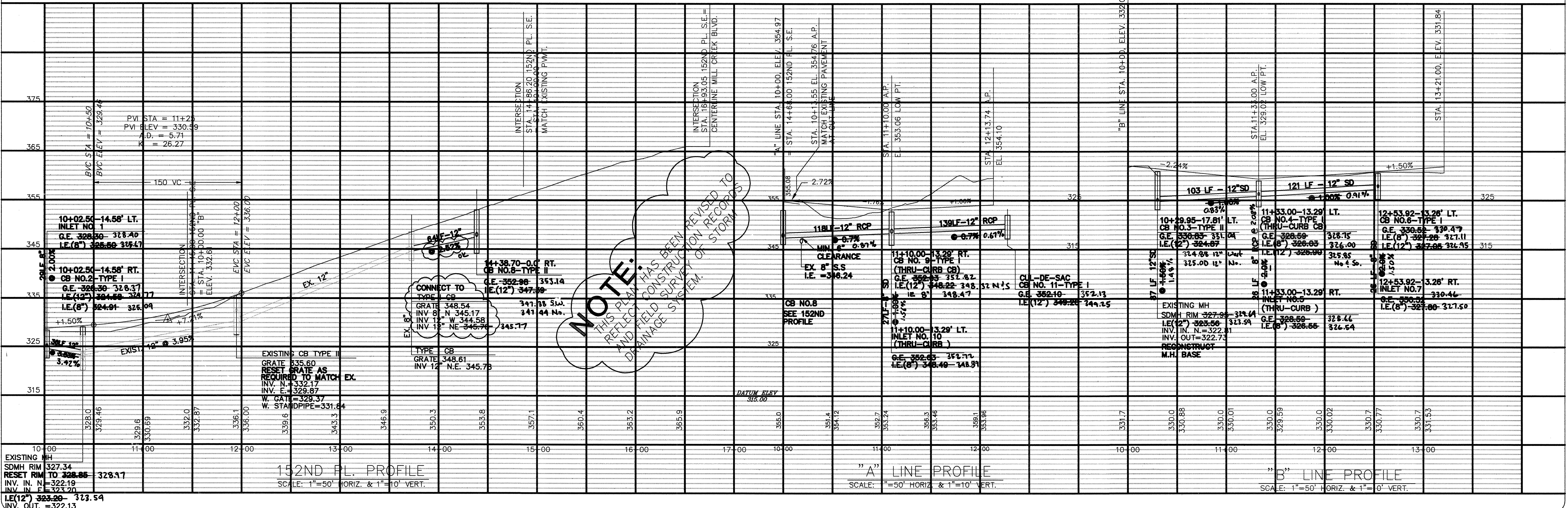
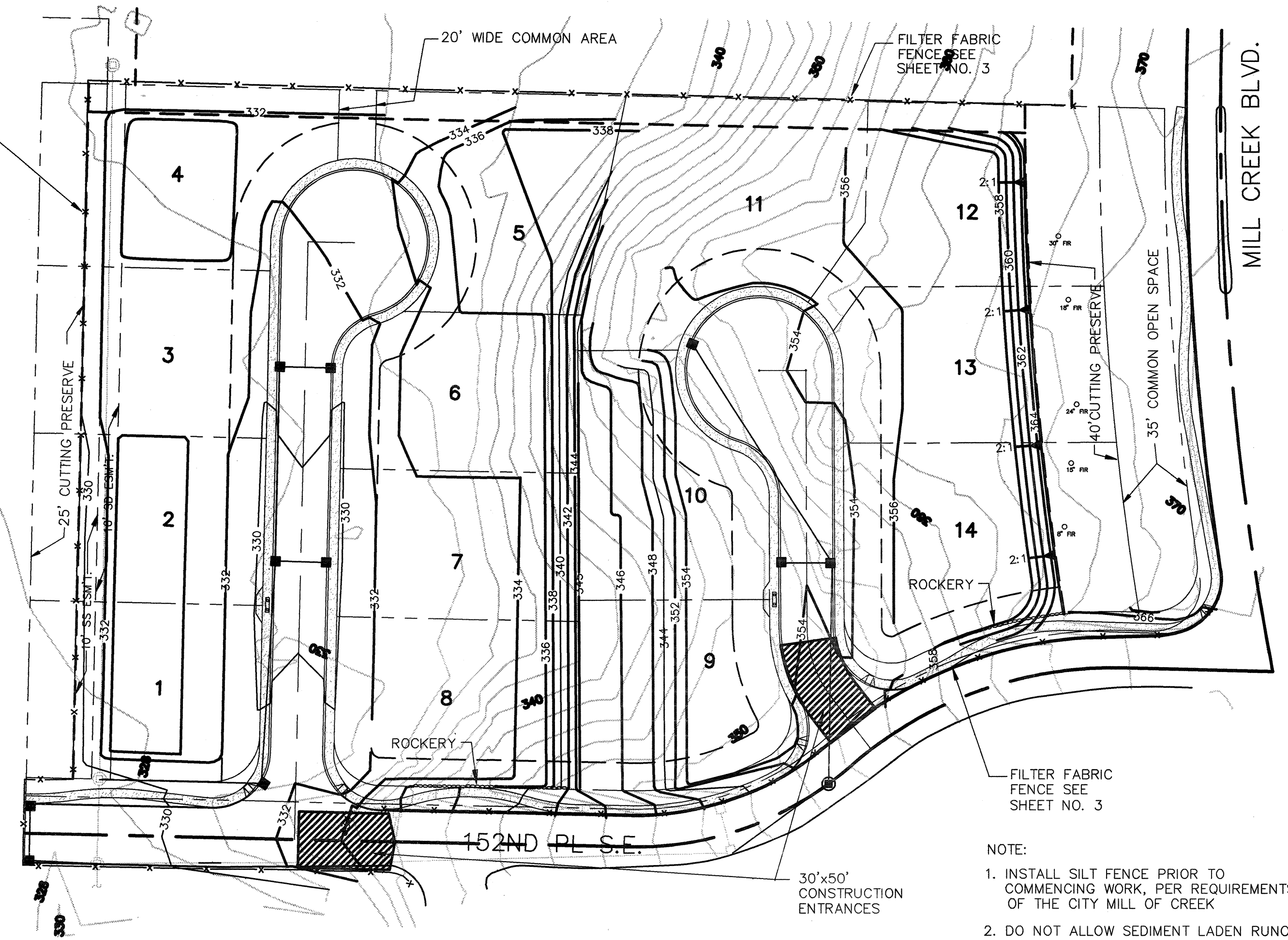
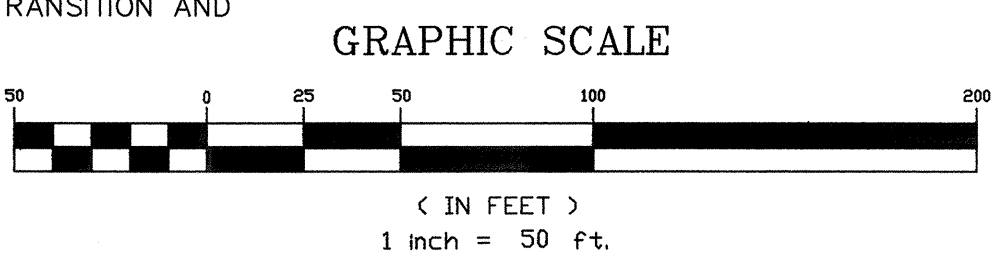
Revisions	By	Date
Date	10-28-92	
Scale	1" = 30'	
Designed	WB	
Drawn	WB	
Checked	MJS	
Approved	FAS	
Dwg. Number	3-3051-3701	
Filename	3701ERDS	
SHEET	4 of 4	

W&H PACIFIC
 3025-112th Avenue N.E.
 P.O. Box C-97304
 Bellevue, WA 98009-9304
 PLANNING • ENGINEERING • SURVEYING • LANDSCAPE ARCHITECTURE



PROPOSED CENTERLINE

NO.	Δ	RADIUS	LENGTH
1	37°09'28"	65.00'	42.15'



Revisions

By	Date	Description
WB	10/12/92	STORM DRAINAGE & PROFILES "A" & "B"
MCJ	11/14/95	LOT LINES, GRADING/BUILDINGS, RAT 1/4/95
MCJ	11/15/95	"AS BUILT"

Date 1/09/95
Scale 1"=50'
Designed MJS
Drawn RAT
Checked RJB
Approved

Dwg. Number 3-3051-4201
Filename LMC20PP2
SHEET 2 of 3